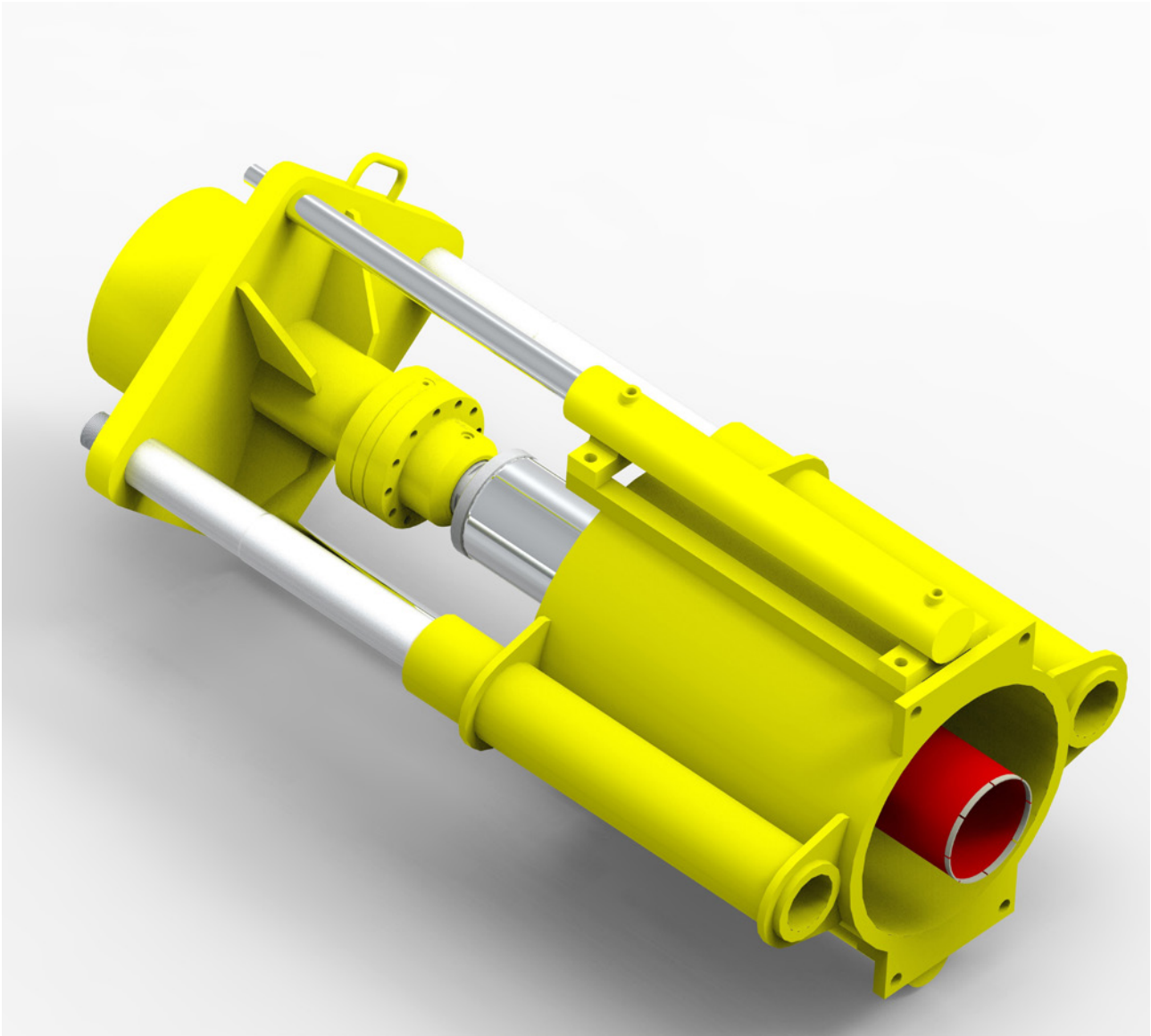


DRILL PIN

In decommissioning, IQIP believes in their **CLEAR** (Cutting, Lifting, Excavating, from Advice to Removal) philosophy. One of our new tailor-made solutions according to this commitment is the Drill Pin.

The tool secures multiple strings, piles or structures during decommissioning lifts. It is beneficial to the current lifting conditions and, more importantly, it can improve safety conditions as well.



SAFETY

Safety is of the upmost importance during decommissioning lifts. The Drill Pin allows you to drill and position pins into jackets and other structures quickly, safely and remotely. When using the Drill Pin with an accompanying Drill Pin Clamp, you can also safeguard piles within the structures during the lifting process.

LIFTING

In decommissioning, ideal hoist points are non-existent which make the conditions for lifting extra tough. When using the Drill Pin as a lifting application, you are able to choose your own hoist point. Perfect for those tight cornered situations where lifting seems nearly impossible.

Short on deck space? The structures can be lifted, upended and picked up in one piece as usual, but can also be divided into smaller, maintainable pieces. As a result, the application allows you to be the manager of your own decommissioning process.

MORE INFORMATION?

Interested in finding out more about the Drill Pin and its application possibilities? Contact us at info@iqip.com for extra information. Visit iqip.com/markets/decommissioning to read more about IQIP's decommissioning solutions.